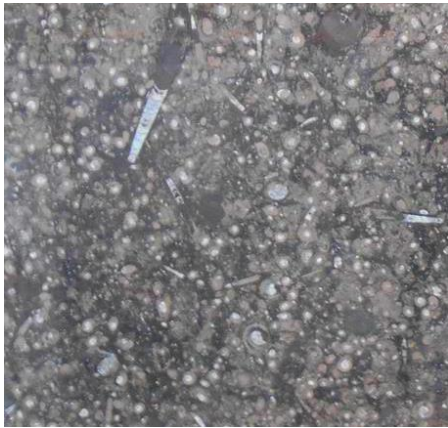


# KAREN PEARSE GLOBAL DIRECT

## Specification and Technical Information

### RELIC MARRONE



**Material Type:** Marble

**Available Sizes:** *Contact us*

**Thickness:** *Contact us*

**Finishes:** Polished, Honed, Flamed, Brushed

Technical Features	Performance
Compressive Strength	988/kg cm <sup>2</sup>
Ultimate Tensile Strength	122/kg cm <sup>2</sup>
Water Absorption	0,13%
Impact Test	27,00 cm
Bulk Density	2689 kg/m <sup>3</sup>